

PARTICLE TEST REPORT

Manufacturer: RunSea technology

Model:RS-PJ-00M010035 / RS-PJ-00M010039 / RS-PJ-00M010036

Description: InsulationCover Set/Prs.Chamb. / InsulationCoverSet/Heat Chamb. / InsulationCover Set/mt.staf.

Test Date: 2008-03-12

RunSea technology Q&A department

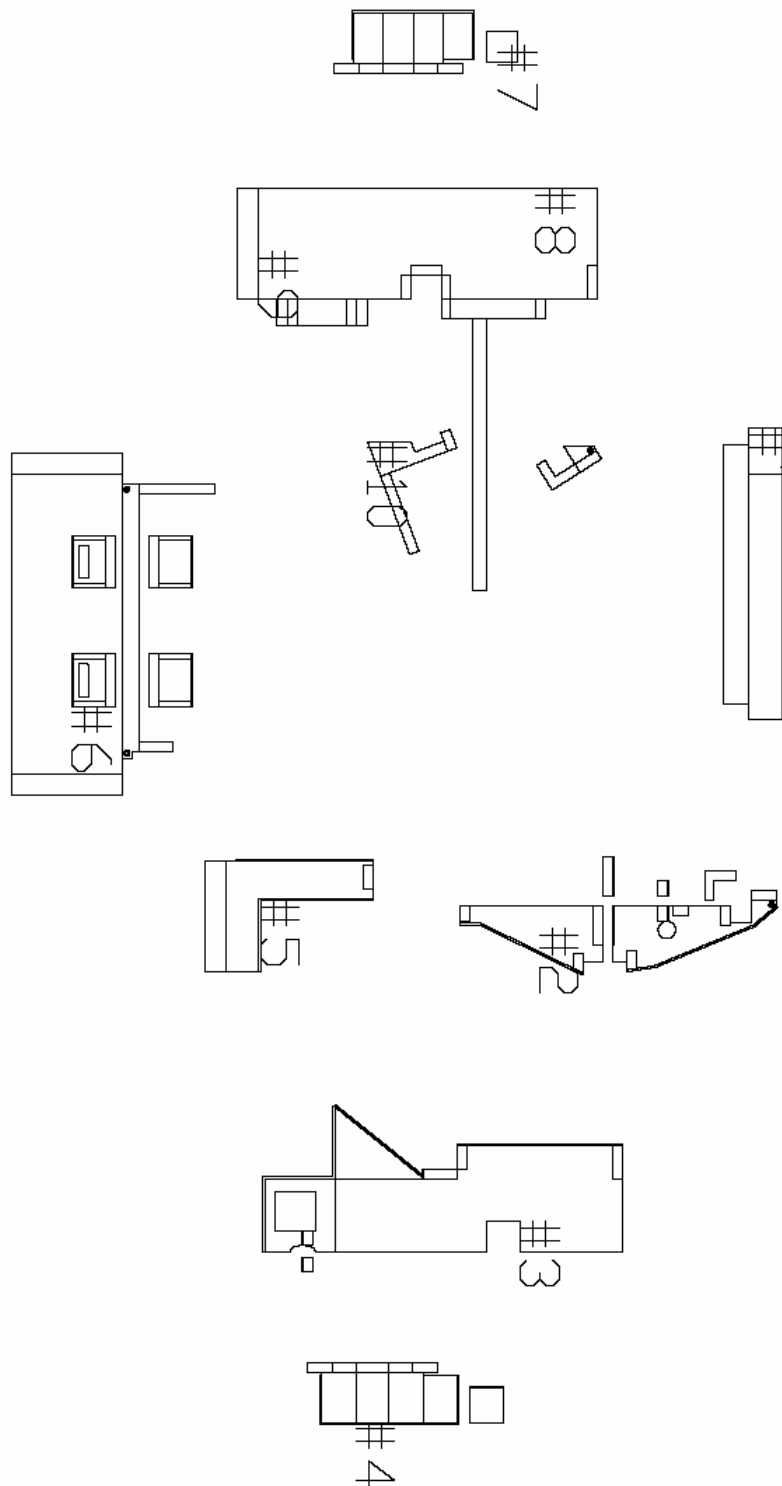
This manufactures packing in class 1000 room

Mfg./Model	Description	Re-mark
RS-PJ-00M010035	InsulationCover Set/Prs.Chamb.	N/A
Arithmetic mean <u>1.0</u> ea / in ² per in ² at $\geq 0.3 \mu\text{m}$, inspect by particle counter, ≥ 10 ea/ per in ² =====		
RS-PJ-00M010039	InsulationCover Set/Heat Chamb	N/A
Arithmetic mean <u>1.1</u> ea / in ² per in ² at $\geq 0.3 \mu\text{m}$, inspect by particle counter, ≥ 10 ea/ per in ² =====		
RS-PJ-00M010036	InsulationCover Set/mt.staf.	N/A
Arithmetic mean <u>1.3</u> ea / in ² per in ² at $\geq 0.3 \mu\text{m}$, inspect by particle counter, ≥ 10 ea/ per in ² =====		



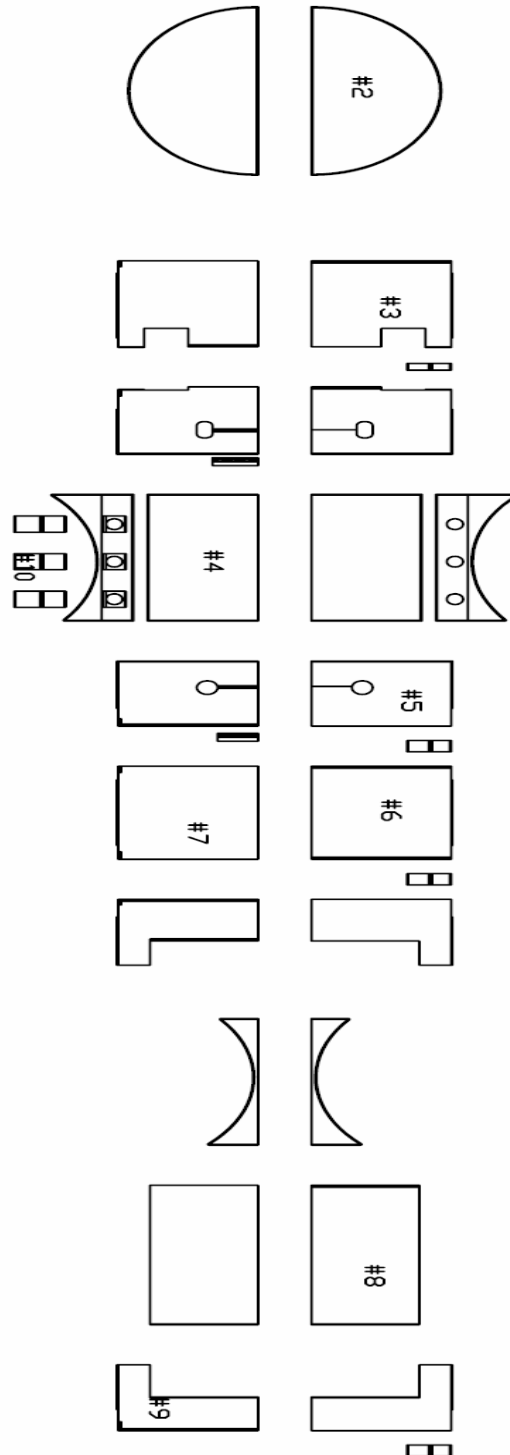
RS-PJ-00M010035

Point	#1	#2	#3	#4	#5	#6	#7	#8	#9	#10
Particle V	1	0	2	0	0	1	1	0	2	3
Re-mark	N/A	N/A	N/A	N/A	N/A	N/A	N/A	N/A	N/A	N/A



RS-PJ-00M010039

Point	#1	#2	#3	#4	#5	#6	#7	#8	#9	#10
Particle V	1	2	1	0	0	3	1	0	2	1
Re-mark	N/A	N/A	N/A	N/A	N/A	N/A	N/A	N/A	N/A	N/A



RS-PJ-00M010036

Point	#1	#2	#3	#4	#5	#6	#7	#8	#9	#10
Particle V	1	0	1	2	0	1	1	3	2	2
Re-mark	N/A	N/A	N/A	N/A	N/A	N/A	N/A	N/A	N/A	N/A

